



2024-2025

Texas Education Data Standards (TEDS)

Restraint Event Domain

Data Submission Requirements

Table of Contents

Restraint Event Domain	3
RestraintEvent Entity	4
Entity Description	4
General Reporting Requirements	5
Special Reporting Requirements	7
Data Element Reporting Requirements.....	7

Restraint Event Domain



The Restraint Event Domain represents the instances where a special education student was physically or mechanically restrained due to imminent serious physical harm to themselves or others, imminent serious property destruction or a combination of both imminent serious physical harm to themselves or others and imminent serious property destruction.

RestraintEvent represents the restraint data for:

- 1) the restraints of **all** students that are administered by LEA/school district police officers and school resource officers (SROs) working with an LEA under a local memorandum of understanding (MOU), and
- 2) the restraints of special education students that are administered by LEA employees, volunteers, and independent contractors.

Refer to Texas Education Code §37.0021 and TAC 89.1053(b)-(c) for additional operational rules related to the management of special education student restraint events.

RestraintEvent Entity

Entity	Entity Ref	Data Element	Collection/Submission	Length	Data Type	Descriptor Table	Element ID
RestraintEvent							
		Student					
		School					
		EventDate	PS	10	Date		E3027
		RestraintEventIdentifier	PS	20	String		E1035
		RestraintEventReason (may have multiple instances)	PS	2	Coded	C173	E1033
		RestraintStaffType	PS	2	Coded	C194	E1516
		NonMembershipDisciplineRestraintIndicator	PS	1	Boolean		E1725

Legend:

- | | | |
|---|-------------------------------------|------------------------|
| ALL – Data element is used by all core collections | CRW – Class Roster Winter | CF – Child Find |
| PF – PEIMS Fall | KG – ECDS KG | RF – RF-Tracker |
| PM – PEIMS Mid-year | PK – ECDS PK | SE – SELA |
| PS – PEIMS Summer | CS – Charter School Waitlist | 14 – SPPI-14 |
| PE – PEIMS Extended Year | | |
| NP – Data element is not promoted to TSDS | | |

Entity Description

The RestraintEvent eEntity represents the restraint data for:

- 1) the restraints of all students that are administered by a local education agency (LEA) police officers and school resource officers (SROs) working with a LEA under a local memorandum of understanding (MOU), and
- 2) the restraints of special education students that are administered by LEA employees, volunteers, and independent contractors.

Refer to Texas Education Code §37.0021 and TAC 89.1053(b)-(c) for additional operational rules related to the management of special education student restraint events.

General Reporting Requirements

The RestraintEvent Entity data is collected in **PEIMS Summer Submission 3** only.

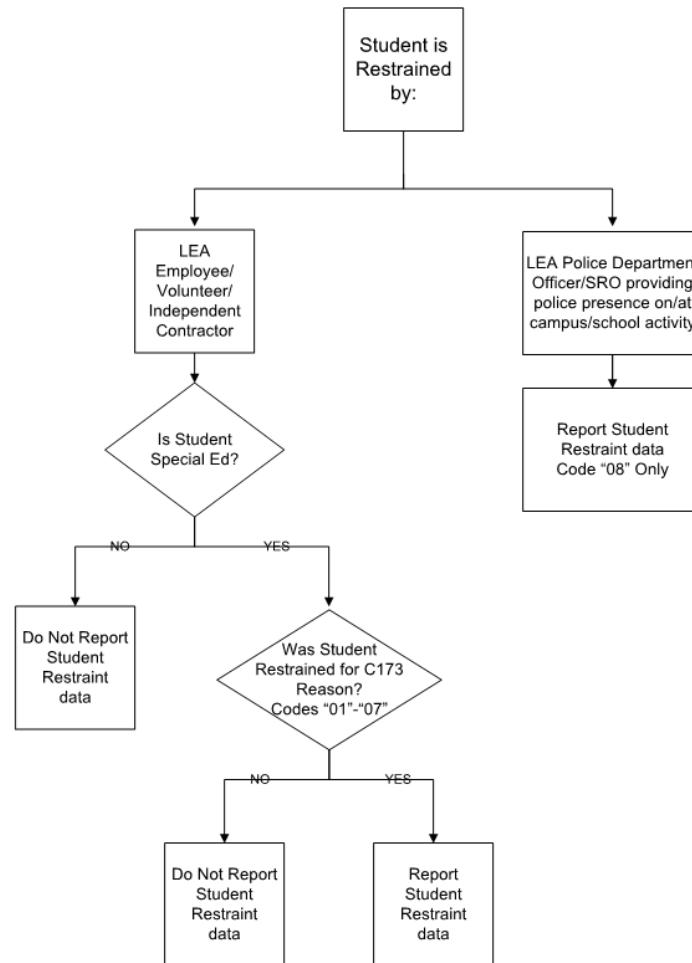
The data entered on the *RestraintEvent* Entity for a particular restraint event should reflect current data for the student at the time the restraint event occurred.

Do not report student restraint events that are performed by law enforcement personnel who are not employed by an LEA police department or who are not serving as an SRO under a MOU with an LEA.

An LEA shall report electronically to the agency information relating to the use of restraint by a peace officer performing law enforcement duties on school property or during a school-sponsored or school-related activity. A report submitted under this rule must be consistent with the requirements as documented in the Student Restraint Reporting Flowchart.

LEA police officers are licensed peace officers who are employed by a police department created by a particular LEA school board. School Resource Officers (SRO) are licensed peace officers who are employed by a state, county, or municipal law enforcement agency who provide a police presence at a school district or charter school, or at a school campus.

STUDENT RESTRAINT REPORTING FLOWCHART



If a student is reported as special education at the time of the restraint event, then that student must be reported with mainstream attendance or special education attendance in an instructional setting in the same reporting period as the restraint event.

If the restraint event occurs on a JJAEP campus, the corresponding restraint record must be reported by the student's home LEA and campus; the campus that the student would attend if they were not attending the JJAEP.

Special Reporting Requirements

The Texas School for the Deaf, Texas School for the Blind and Visually Impaired, and the Texas Juvenile Justice Department are also required to report student restraint data for their respective populations related to restraint events that occur within the educational program of the school and subject to any limitations imposed by TEC 37.0021.

PEIMS Summer Submission 3:

If a special education student is enrolled but not in membership and the special education student has a restraint incident, the *RestraintEvent* Entity shall be reported.

Data Element Reporting Requirements

Student Reference

The Student Reference represents the identifier assigned to the student.

School Reference

The School Reference represents the identifier assigned to the campus.

EventDate (E1034) indicates the actual date on which a student was restrained for emergency purposes.

RestraintEventIdentifier (E1035) indicates a restraint instance that occurs on a campus. It allows an LEA or campus to assign a unique identification number to a restraint event to distinguish between multiple instances of restraints that might occur at the same school on the same date for a given student.

RestraintEventReason (E1033) indicates that a student was physically or mechanically restrained due to imminent serious physical harm to themselves or others, imminent serious property destruction, or a combination of both imminent serious physical harm to themselves or others and imminent serious property destruction.

The *RestraintEventReason* data element may have multiple instances.

RestraintStaffType (E1516) indicates the kind of school staff person that performed a student restraint.

School staff persons performing student restraints are categorized as one of the following:

- 1) LEA employees, volunteers, or independent contractors, and
- 2) LEA police officers or school resource officers (SRO).

LEA employees, volunteers, or independent contractors are not law enforcement personnel. Student restraints performed by these staff are only reported if the student was a special education student at the time of the restraint event. Do not report non-special education student restraints performed by LEA employees, volunteers, or independent contractors.

LEA police officers are licensed peace officers who are employed by a police department created by a particular LEA school board. School Resource Officers (SRO) are licensed peace officers who are employed by a state, county, or municipal law enforcement agency who through contract with a school district or charter school provide a police presence at a school district or charter school, or at a school campus.

NonMembershipDisciplineRestraintIndicator (E1725) indicates the restraint event being reported is for a special education student enrolled, not in membership.